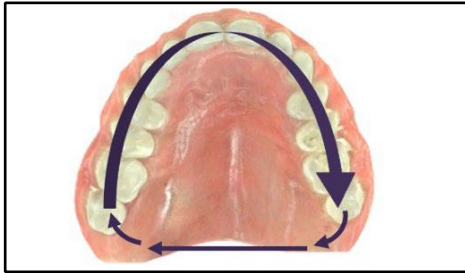


**Tips for success**

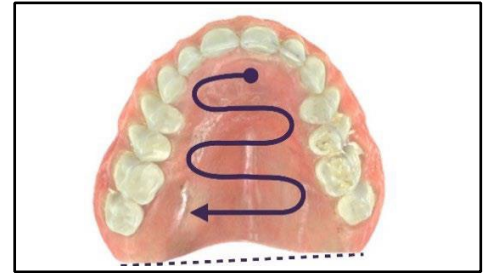
- Remove excess saliva from denture
- Start on the occlusal surface of denture teeth
- The wand will be flat and contacting the denture
- Keep the denture in a stable position while scanning
- Disable artificial intelligence (A.I.) cleanup after capturing the initial segment
- Move slow and steady in a continuous pattern to allow the scanner to capture the images to build the 3D scan \*
- Keep disposable sleeve lens clean and clear of moisture and debris
- Trim away excess VPS material

**Step 1: Scan occlusal**



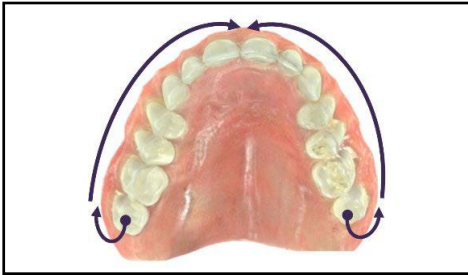
- Start on the occlusal surface
- Hold denture steady
- Maintain contact with denture while scanning
- Capture the contour of the posterior seal
- Turn off wand and disable iTero™ Scan Assistant (Disable A.I. cleanup)

**Step 2: Scan palate**



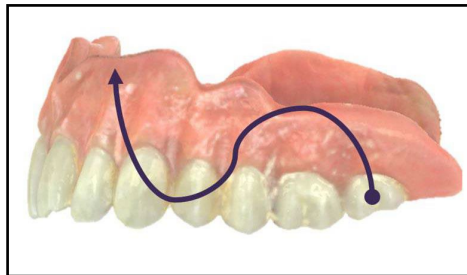
- Position the wand on the incisal lingual surface of anterior teeth before turning wand on
- Scan the palate, moving the wand in a wave like motion across the palate
- Stay in contact with the surface of the denture
- Scan occlusal surface of the teeth before rolling onto the buccal of the denture

**Step 3: Scan buccal quadrants**



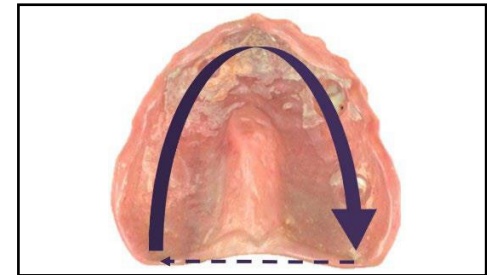
- Move from the occlusal to the buccal of the denture
- The wand should be in a horizontal position to capture the buccal

**Step 4: Scan bilateral buccal flanges**



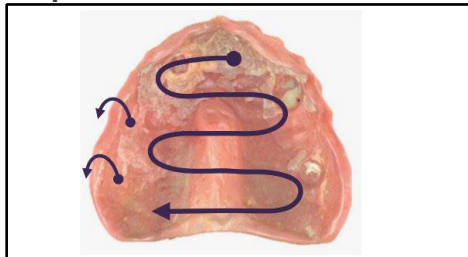
- Stay in contact with the denture
- Move the wand in a wave like motion to capture teeth and the contour of the buccal flange
- Repeat on the opposite side to complete the scan
- Press the button on the wand to pause the scan

**Step 5: Scan intaglio**



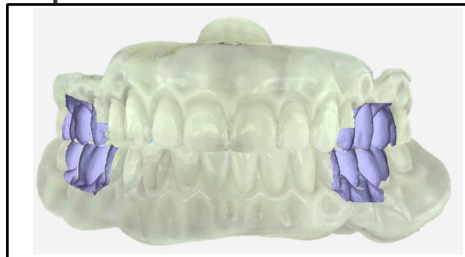
- Press the button on the wand to resume the scan on the intaglio
- Start on the ridge near the posterior seal to begin scanning the intaglio surface
- Angle the wand closer to the denture to capture hard to reach surfaces, like undercuts

**Step 6: Scan alveolar fossae**



- Position the wand toward the anterior intaglio
- Move the wand in a wave like motion down and across the intaglio to the posterior seal
- Move the wand across the posterior seal
- Roll over the border mold or buccal flange
- The internal and external denture scans will merge

**Step 7: Scan bilateral bite**



- Seat denture in patients' mouth
- Sit patient at 45° angle

- Place wand between cheek and denture and have patient close
- Scan once the occlusal plane is centered and turn the wand on
- Move the entire wand straight up and straight down
- Turn off the wand when the bite comes together
- Repeat the same sequence on the opposite side.

\*Scan order is subject to change based on iTero scanning protocols and lab guidance. Quality of scan will vary based on clinician scanning experience and clinical conditions.